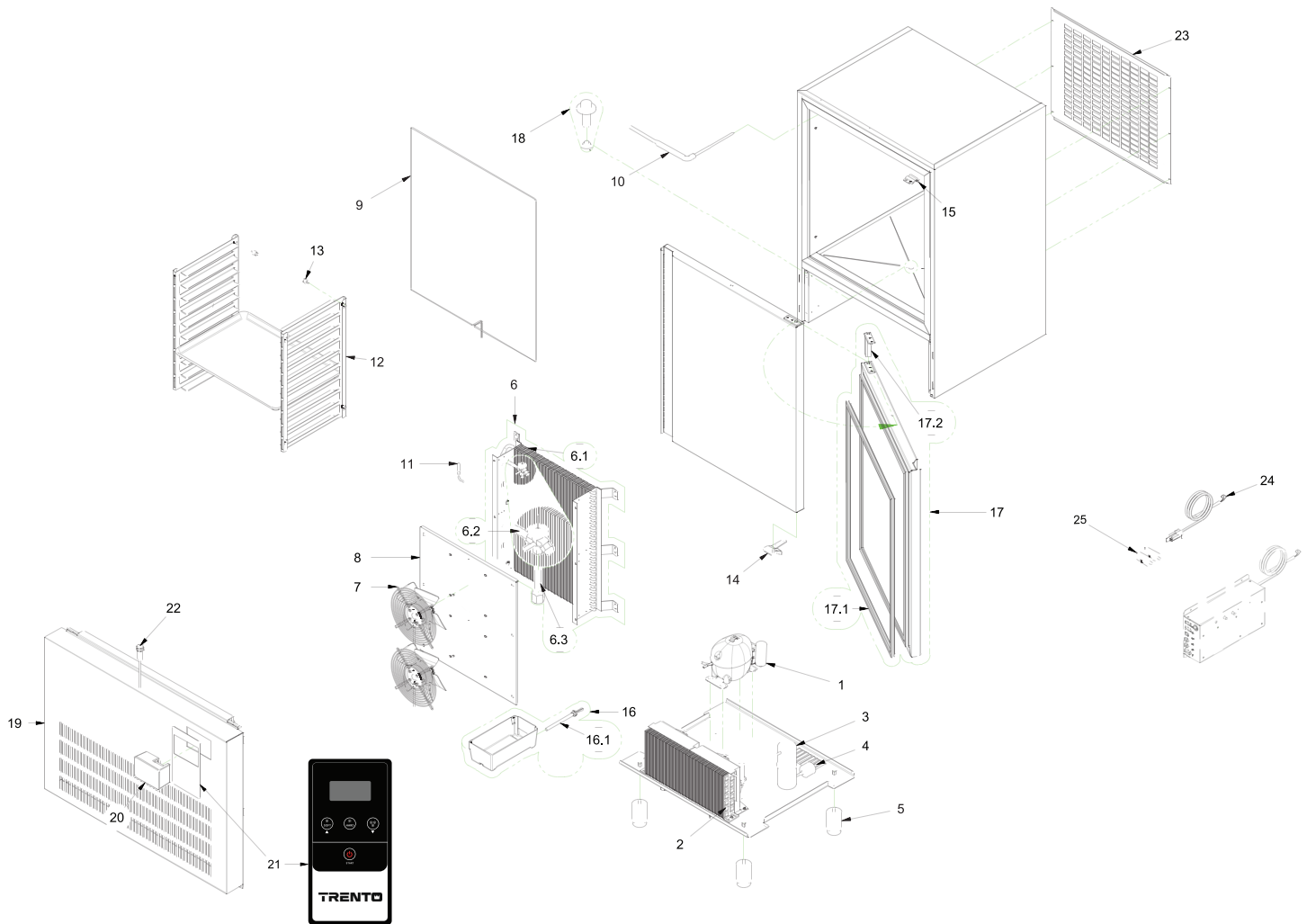


PARTS BREAKDOWN

ITEM	MODEL
46674	BC-IT-0910-T



PARTS BREAKDOWN

ITEM	MODEL
46674	BC-IT-0910-T

Item No.	Description	Position	Item No.	Description	Position	Item No.	Description	Position
64929	Compressor NJ2212GJ R404A for 46674	1	64931	Frame Heating Element AB10T 15W/M for 46674	9	42094	Door Pivot Hinge 28L S/F-13 for 46674	17.2
AD109	Condenser for 46674	2	42110	Core Probe PTC 1000 L=3000 Gray for 46674	10	AD100	Assembled Blast Chiller Cap for 46674	18
AD104	Liquid Receiver for 46674	3	42109	Chamber Probe PTC L=2500 Green for 46674	11	AD107	Dashboard for 46674	19
42103	Filter 50x6mm for 46674	4	AD111	Grid Stead/OM.01 (Trayholder AB-10 Americ) for 46674	12	AD085	Electronic Card EVJ815P9PX3 for 46674	20
AD092	Adjustable Foot for 46674	5	AD097	Pin for Grid Stead for 46674	13	AR076	Adhesive Mask Trento Silver Gloss for 46674	21
AD110	Evaporating Unit for 46674	6	42118	Right Inferior Hinge for 46674	14	AD087	Magnetic Microswitch for 46674	22
42100	Evaporator AB-05 for 46674	6.1	42116	Right Superior Hinge for 46674	15	AD108	Rear Cover for 46674	23
AD094	Thermostatic Valve for 46674	6.2	64958	Evaporation Water Tank 270W L=1500 for 46674	16	AD090	Power Supply Cable for 46674	24
64964	Flat Inlet TE2 N° 02 ODF for 46674	6.3	42120	Evaporation Water Tank 190W L=1500 for 46674	16.1	42113	Electric Condenser 2MF for 46674	25
42111	Zhiel Fan AB D=300 + 2Cond Ass. Fan D300 + Flat Grid for 46674	7	64957	Foamed Door AB ECO-E4-10 DX for 46674	17	AN817	Door Inversion Kit for 46674	
AD095	Conveyor for 46674	8	64917	Door Magnet Gasket AB-E4-10 for 46674	17.1			