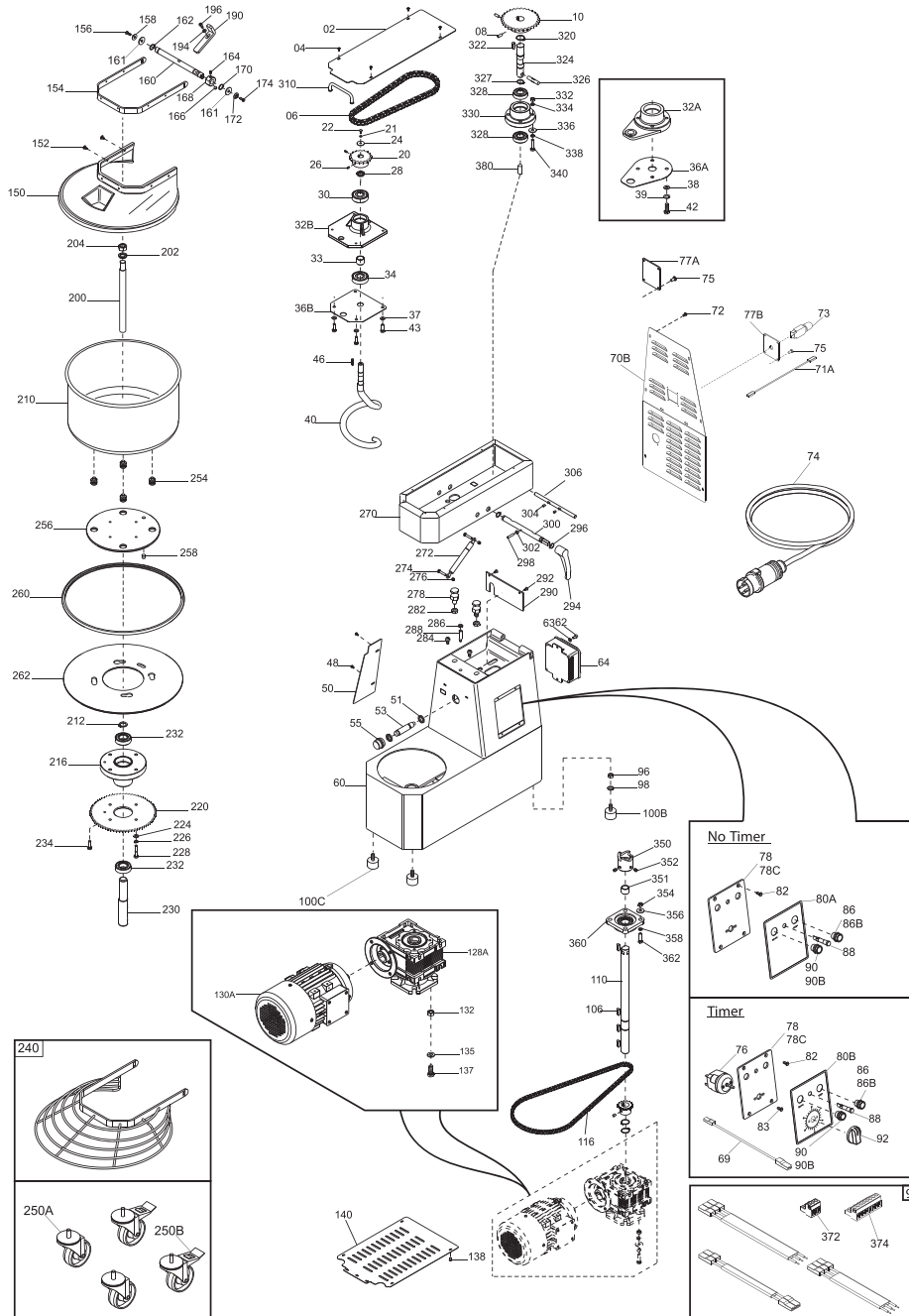


PARTS BREAKDOWN

ITEM	MODEL
47088	MX-IT-0030-R



PARTS BREAKDOWN

ITEM	MODEL
47088	MX-IT-0030-R

Item No.	Description	Position	Item No.	Description	Position	Item No.	Description	Position
AH116	Upper Casing ETL TA 30 VRN for 47088	02	AH050	Spacer for 47088	28	AH019	Screw TCEI Din 912 M6x10 for 47088	62
69217	Screw Poeliers M4x8 for 47088	04, 48, 72, 83, 138	AH034	Ball Bearing 6204 2RS NTN for 47088	30, 34	AH066	Electric Box TGM2SIR MN for 47088	64
AH038	Chain 1/2x5/6" for 47088	06	AH037	Spiral Cast Iron Supp Y12 HRC 30 Lav. for 47088	32B	AH117	Rear Carter Y16 ETL TA 30 VRN for 47088	70B
AH031	Screw Din 916 M6x20 NE for 47088	08	AH052	Dist.Int.Cusc.Supp.Spiral for 47088	33	AG952	Power Cable UL Thermal Protection for 47088	71A
AG959	Pinion Z30 1/2x5/16" for 47088	10	AH049	Spiral Support Plate Y12 for 47088	36B	AH046	Thermal Protection T11-211 11A MN for 47088	73
AH027	Nut ES. Din 934 M10 for 47088	12, 97, 132, 354	62644	Flat Washer Din 125 D8 for 47088	37, 334, 356	AH112	Power Cable Comp. 220/60 UL for 47088	74
62645	Flat Washer Din 125 D10 for 47088	15, 135, 338, 358	AH048	Spiral Y17 for 47088	40	AG991	Supp. Plate Prot. Term. MN for 47088	77B
AH016	Washer F.Larga Din 9021 D10x30 for 47088	16	AH022	Screw TE Din 933 M8x25 T.F. for 47088	43, 234	AH060	Plate. Controls Panel for 47088	78
AH025	Screw TE Din 933 M10x35 T.F. for 47088	18, 362	AH067	Feathers Din 6885 / A6x6x25 for 47088	46	AH011	Screw TC+Din 7985 M4x8 for 47088	79
AH040	Pinion Z17 1/2x5/16" D20 for 47088	20	AH059	Tank Protection ETL Vern. for 47088	50	AG971	Face Plate. Controls Panel for 47088	80A
AH004	Grower Washer Uni 1751 D8 for 47088	21, 23, 226, 336	AH076	Proximity Sensor TA for 47088	53, 51	AH012	Screw TSPEI Din 7991 M5x8 for 47088	82, 292
62663	X.Screw Din 933 M8x20 for 47088	22	AH096	Proximity Support for 47088	55	AH014	Washer F.Larga Din 9021 D4x12 for 47088	84, 273
AH070	Washer F Wide Din 9021 D8x32 ZN for 47088	24	AH115	Welded Frame ETL TA 30 Vern. for 47088	60	AG949	Black Push Button N.O. for 47088	86
AH069	Screw without Head Din 916 M5x16 NE for 47088	26	62660	Washer F Wide Din 9021 D6x18 for 47088	61	AG947	Stainless Steel Off Button Resin-Coated Y12 UL for 47088	86B

PARTS BREAKDOWN

ITEM	MODEL
47088	MX-IT-0030-R

Item No.	Description	Position	Item No.	Description	Position	Item No.	Description	Position
AG951	Unified Light UL 24 V for 47088	88	AH063	Lid Frame for 47088	154	AH028	Nut ES. Din 934 M18 for 47088	204
AG950	White Push Button N.O. for 47088	90	AH013	Flathead CSK Screw Din 7991 M5x14 for 47088	156	AH051	Bowl 400x260 for 47088	210
AG948	Stainless Steel On Button with Light Y12 Resin UL for 47088	90B	AH055	Lid Shaft for 47088	160	AG955	Bowl Holder for 47088	216
AH120	Internal Panel ETL 30 TA for 47088	94	AG996	Plastic Washer 16x25x1 for 47088	161	AH110	Chain Ring Z85 3/8x7/32" for 47088	220
AH113	Internal Wiring 220/60 UL TA for 47088	99	AH006	Stop Rings Din 471 D15E for 47088	162	AH023	Screw TE Din 933 M8x35 T.F. for 47088	228
AH007	Retaining Rings Din 471 D25E for 47088	104, 212, 320	18960	Magnet for SO Anodized for 47088	166	AG981	Shaft. Bowl Support for 47088	230
AH009	Feathers Din 6885 / A8x7x25 for 47088	106, 322, 355	AG997	Cam TA for 47088	168	AH032	Screw without Head Din 916 M8x16 NE for 47088	231
AH114	Transmission Shaft T1 30-40 for 47088	110	AG977	Washer for 47088	172	AG945	Bearing 6205 2RS ORS for 47088	232, 328
AH039	Chain 3/8x7/32" for 47088	116	AH026	Hex.Nut Din 934 M4 for 47088	177, 302	AG998	Wheels ETL CMT1-3PBB for 47088	250A
AH030	Grub Screw Din 916 M6x8 NE for 47088	118, 164, 304, 353	AH000	Washer Flat Din 125 D.4 for 47088	179, 194	AG999	ETL Wheel C/Brake CMT1-3PPB for 47088	250B
AH041	Pinion Z20 3/8x7/32" D25 for 47088	120	69215	Nut Din 934 M3 for 47088	182	AH087	Bowl Insert. TA for 47088	254
AH044	Reducer NMRV 063 B14 1/30 FA 90 for 47088	128A, 130A	AH017	Screw TCEI Din 912 M4x12 for 47088	184, 196, 271	AH085	Fixed Disc TA for 47088	256
62664	Screw TE Din 933 M10x20 T.F. for 47088	137	AG989	Corner Plate for 47088	190	AH086	Pin for 47088	258
AH061	Underdeck Protection for 47088	140	AH054	Shaft for 47088	200	AH124	Rubber Protection for 47088	260
AH065	ETL Thermoformed Protection for 47088	150	AH005	Grower Washer Uni 1751 D18 for 47088	201	AH121	Rotating Disc 30 TA for 47088	262
69218	Screw Poeliers M5x8 for 47088	152	AH033	Flat Washer Din 125 D18 Zinc for 47088	202	AH118	Welded Head ETL TA 30 Vern. for 47088	270

PARTS BREAKDOWN

ITEM	MODEL
47088	MX-IT-0030-R

Item No.	Description	Position	Item No.	Description	Position	Item No.	Description	Position
AH111	Gas Spring 084093 TA for 47088	272	AH119	Protection Micro ETL TA 30 VRN for 47088	290	AH102	C-Clip.Retaining Din 471 D.20 Ext for 47088	327
AH105	Screw TE Din 933 M6x30 T.F. for 47088	274	AH095	Release Lever. TA for 47088	294	AH071	Head Holder for 47088	330
62643	Flat Washer Din 125 D6 for 47088	275	AH101	Retaining Rings Din 471 D16E for 47088	296	AH092	Transmission Joint TA for 47088	350
AH106	Hex.Nut Din 934 M6 for 47088	276	AH104	Grub Screw Din 913 M4x35 CE for 47088	298	AH074	Distance Transm. Joint 20-30 TA for 47088	351
AH093	Hexagonal Screw for 47088	278	AH122	Release Shaft TA 30 for 47088	300	AG958	Flange Support for 47088	360
AH099	Washer Din 125 D12 for 47088	280	AH123	Hinge Pin 30 TA for 47088	306	AG969	3-Pole HRC Connector for 47088	372
AH109	Self-Lock Nut ES DIN982 M12 Low for 47088	282	AH075	Handle TA for 47088	310	AG970	8 Poles HRC Connector for 47088	374
AH097	Supp. Cover Sensor M10 TA for 47088	283	AC008	Screw Din 916 M8x10 NE for 47088	321, 352	AH107	Screw without Head Din 916 M8x12 NE for 47088	380
AH094	Pin TA for 47088	284	AH089	Transmission Shaft for 47088	324			
AH077	Magnet Sensor Head UL TA for 47088	288	AH103	Pin Inox Din 7 D10x50 for 47088	326			