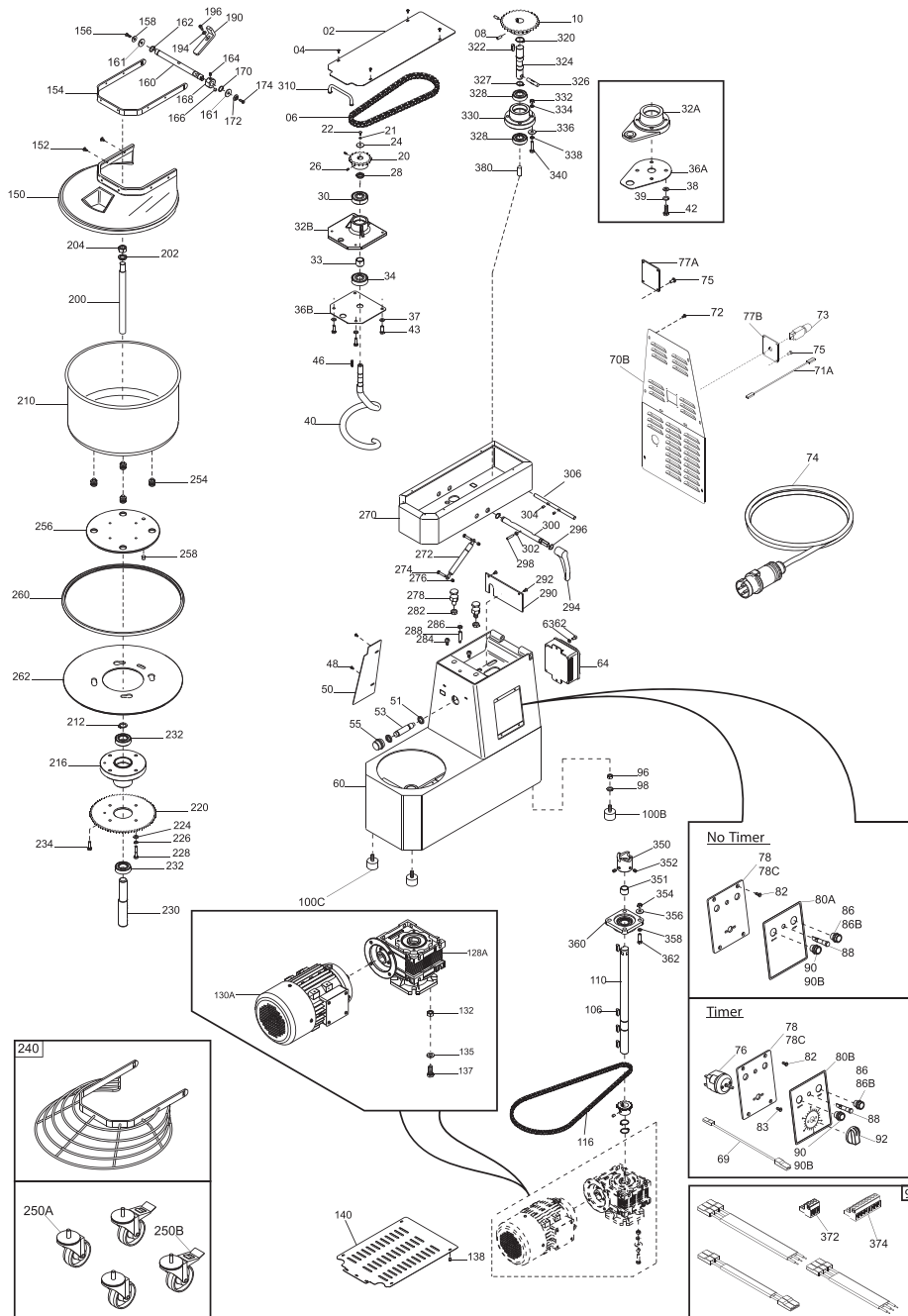


# PARTS BREAKDOWN

| ITEM  | MODEL         |
|-------|---------------|
| 47288 | MX-IT-0030-RT |



# PARTS BREAKDOWN

| ITEM  | MODEL         |
|-------|---------------|
| 47288 | MX-IT-0030-RT |

| Item No. | Description                                   | Position            | Item No. | Description                                     | Position     | Item No. | Description  | Position |
|----------|---|---------------------|----------|---|--------------|----------|--|----------|
| AH116    | Upper Casing ETL TA 30 VRN for 47288          | 02                  | AH050    | Spacer for 47288                                | 28           | AH019    | Screw TCEI Din 912 M6x10 for 47288                       | 62       |
| 69217    | Screw Poeliers M4x8 for 47288                 | 04, 48, 72, 83, 138 | AH034    | Ball Bearing 6204 2RS NTN for 47288             | 30, 34       | AH066    | Electric Box TGM2SIR MN for 47288                        | 64       |
| AH038    | Chain 1/2x5/6" for 47288                      | 06                  | AH037    | Spiral Cast Iron Supp Y12 HRC 30 Lav. for 47288 | 32B          | AH117    | Rear Carter Y16 ETL TA 30 VRN for 47288                  | 70B      |
| AH031    | Screw Din 916 M6x20 NE for 47288              | 08                  | AH052    | Dist.Int.Cusc.Supp.Spiral for 47288             | 33           | AG952    | Power Cable UL Thermal Protection for 47288              | 71A      |
| AG959    | Pinion Z30 1/2x5/16" for 47288                | 10                  | AH049    | Spiral Support Plate Y12 for 47288              | 36B          | AH046    | Thermal Protection T11-211 11A MN for 47288              | 73       |
| AH027    | Nut ES. Din 934 M10 for 47288                 | 12, 97, 132, 354    | 62644    | Flat Washer Din 125 D8 for 47288                | 37, 334, 356 | AH112    | Power Cable Comp. 220/60 UL for 47288                    | 74       |
| 62645    | Flat Washer Din 125 D10 for 47288             | 15, 135, 338, 358   | AH048    | Spiral Y17 for 47288                            | 40           | AG991    | Supp. Plate Prot. Term. MN for 47288                     | 77B      |
| AH016    | Washer F.Larga Din 9021 D10x30 for 47288      | 16                  | AH022    | Screw TE Din 933 M8x25 T.F. for 47288           | 43, 234      | AH060    | Plate. Controls Panel for 47288                          | 78       |
| AH025    | Screw TE Din 933 M10x35 T.F. for 47288        | 18, 362             | AH067    | Feathers Din 6885 / A6x6x25 for 47288           | 46           | AH011    | Screw TC+Din 7985 M4x8 for 47288                         | 79       |
| AH040    | Pinion Z17 1/2x5/16" D20 for 47288            | 20                  | AH059    | Tank Protection ETL Vern. for 47288             | 50           | AG971    | Face Plate. Controls Panel for 47288                     | 80A      |
| AH004    | Grower Washer Uni 1751 D8 for 47288           | 21, 23, 226, 336    | AH076    | Proximity Sensor TA for 47288                   | 53, 51       | AH012    | Screw TSPEI Din 7991 M5x8 for 47288                      | 82, 292  |
| 62663    | X.Screw Din 933 M8x20 for 47288               | 22                  | AH096    | Proximity Support for 47288                     | 55           | AH014    | Washer F.Larga Din 9021 D4x12 for 47288                  | 84, 273  |
| AH070    | Washer F Wide Din 9021 D8x32 ZN for 47288     | 24                  | AH115    | Welded Frame ETL TA 30 Vern. for 47288          | 60           | AG949    | Black Push Button N.O. for 47288                         | 86       |
| AH069    | Screw without Head Din 916 M5x16 NE for 47288 | 26                  | 62660    | Washer F Wide Din 9021 D6x18 for 47288          | 61           | AG947    | Stainless Steel Off Button Resin-Coated Y12 UL for 47288 | 86B      |

# PARTS BREAKDOWN

| ITEM  | MODEL         |
|-------|---------------|
| 47288 | MX-IT-0030-RT |

| Item No. | Description   | Position           | Item No. | Description                                 | Position      | Item No. | Description                                   | Position |
|----------|---|--------------------|----------|---|---------------|----------|---|----------|
| AG951    | Unified Light UL 24 V for 47288                             | 88                 | AH063    | Lid Frame for 47288                         | 154           | AH028    | Nut ES. Din 934 M18 for 47288                 | 204      |
| AG950    | White Push Button N.O. for 47288                            | 90                 | AH013    | Flathead CSK Screw Din 7991 M5x14 for 47288 | 156           | AH051    | Bowl 400x260 for 47288                        | 210      |
| AG948    | Stainless Steel On Button with Light Y12 Resin UL for 47288 | 90B                | AH055    | Lid Shaft for 47288                         | 160           | AG955    | Bowl Holder for 47288                         | 216      |
| AH120    | Internal Panel ETL 30 TA for 47288                          | 94                 | AG996    | Plastic Washer 16x25x1 for 47288            | 161           | AH110    | Chain Ring Z85 3/8x7/32" for 47288            | 220      |
| AH113    | Internal Wiring 220/60 UL TA for 47288                      | 99                 | AH006    | Stop Rings Din 471 D15E for 47288           | 162           | AH023    | Screw TE Din 933 M8x35 T.F. for 47288         | 228      |
| AH007    | Retaining Rings Din 471 D25E for 47288                      | 104, 212, 320      | 18960    | Magnet for SO Anodized for 47288            | 166           | AG981    | Shaft. Bowl Support for 47288                 | 230      |
| AH009    | Feathers Din 6885 / A8x7x25 for 47288                       | 106, 322, 355      | AG997    | Cam TA for 47288                            | 168           | AH032    | Screw without Head Din 916 M8x16 NE for 47288 | 231      |
| AH114    | Transmission Shaft T1 30-40 for 47288                       | 110                | AG977    | Washer for 47288                            | 172           | AG945    | Bearing 6205 2RS ORS for 47288                | 232, 328 |
| AH039    | Chain 3/8x7/32" for 47288                                   | 116                | AH026    | Hex.Nut Din 934 M4 for 47288                | 177, 302      | AG998    | Wheels ETL CMT1-3PBB for 47288                | 250A     |
| AH030    | Grub Screw Din 916 M6x8 NE for 47288                        | 118, 164, 304, 353 | AH000    | Washer Flat Din 125 D.4 for 47288           | 179, 194      | AG999    | ETL Wheel C/Brake CMT1-3PPB for 47288         | 250B     |
| AH041    | Pinion Z20 3/8x7/32" D25 for 47288                          | 120                | 69215    | Nut Din 934 M3 for 47288                    | 182           | AH087    | Bowl Insert. TA for 47288                     | 254      |
| AH044    | Reducer NMRV 063 B14 1/30 FA 90 for 47288                   | 128A, 130A         | AH017    | Screw TCEI Din 912 M4x12 for 47288          | 184, 196, 271 | AH085    | Fixed Disc TA for 47288                       | 256      |
| 62664    | Screw TE Din 933 M10x20 T.F. for 47288                      | 137                | AG989    | Corner Plate for 47288                      | 190           | AH086    | Pin for 47288                                 | 258      |
| AH061    | Underdeck Protection for 47288                              | 140                | AH054    | Shaft for 47288                             | 200           | AH124    | Rubber Protection for 47288                   | 260      |
| AH065    | ETL Thermoformed Protection for 47288                       | 150                | AH005    | Grower Washer Uni 1751 D18 for 47288        | 201           | AH121    | Rotating Disc 30 TA for 47288                 | 262      |
| 69218    | Screw Poeliers M5x8 for 47288                               | 152                | AH033    | Flat Washer Din 125 D18 Zinc for 47288      | 202           | AH118    | Welded Head ETL TA 30 Vern. for 47288         | 270      |

# PARTS BREAKDOWN

| ITEM  | MODEL         |
|-------|---------------|
| 47288 | MX-IT-0030-RT |

| Item No. | Description                               | Position | Item No. | Description                              | Position | Item No. | Description                                   | Position |
|----------|---|----------|----------|--|----------|----------|---|----------|
| AH111    | Gas Spring 084093 TA for 47288            | 272      | AH119    | Protection Micro ETL TA 30 VRN for 47288 | 290      | AH102    | C-Clip.Retaining Din 471 D.20 Ext for 47288   | 327      |
| AH105    | Screw TE Din 933 M6x30 T.F. for 47288     | 274      | AH095    | Release Lever. TA for 47288              | 294      | AH071    | Head Holder for 47288                         | 330      |
| 62643    | Flat Washer Din 125 D6 for 47288          | 275      | AH101    | Retaining Rings Din 471 D16E for 47288   | 296      | AH092    | Transmission Joint TA for 47288               | 350      |
| AH106    | Hex.Nut Din 934 M6 for 47288              | 276      | AH104    | Grub Screw Din 913 M4x35 CE for 47288    | 298      | AH074    | Distance Transm. Joint 20-30 TA for 47288     | 351      |
| AH093    | Hexagonal Screw for 47288                 | 278      | AH122    | Release Shaft TA 30 for 47288            | 300      | AG958    | Flange Support for 47288                      | 360      |
| AH099    | Washer Din 125 D12 for 47288              | 280      | AH123    | Hinge Pin 30 TA for 47288                | 306      | AG969    | 3-Pole HRC Connector for 47288                | 372      |
| AH109    | Self-Lock Nut ES DIN982 M12 Low for 47288 | 282      | AH075    | Handle TA for 47288                      | 310      | AG970    | 8 Poles HRC Connector for 47288               | 374      |
| AH097    | Supp. Cover Sensor M10 TA for 47288       | 283      | AC008    | Screw Din 916 M8x10 NE for 47288         | 321, 352 | AH107    | Screw without Head Din 916 M8x12 NE for 47288 | 380      |
| AH094    | Pin TA for 47288                          | 284      | AH089    | Transmission Shaft for 47288             | 324      |          |   |          |
| AH077    | Magnet Sensor Head UL TA for 47288        | 288      | AH103    | Pin Inox Din 7 D10x50 for 47288          | 326      |          |   |          |