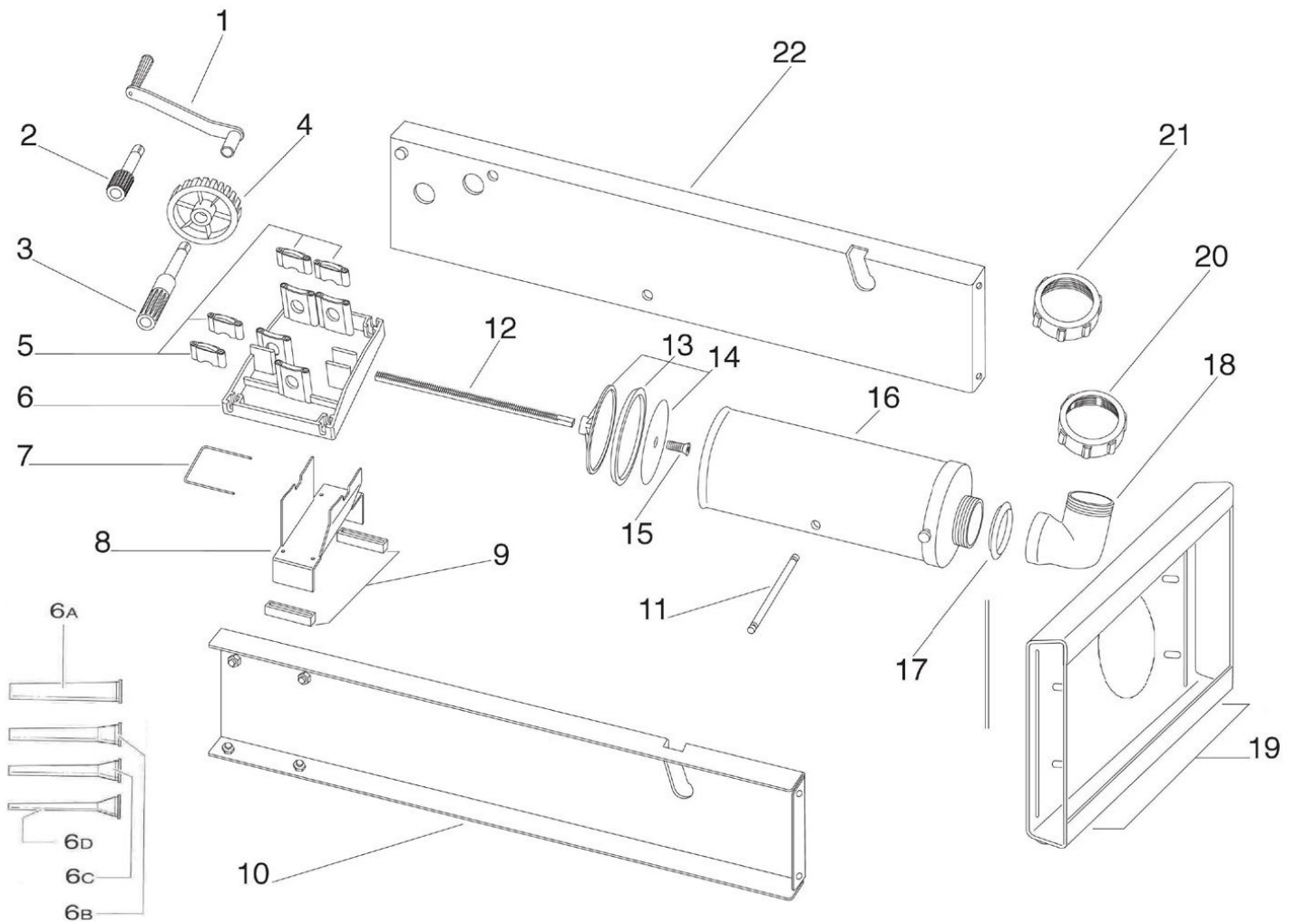


PARTS BREAKDOWN

ITEM

48164



PARTS BREAKDOWN

ITEM

48164

Item No.	Description	Position	Item No.	Description	Position	Item No.	Description	Position
AQ091	Crank for 48164	1	AQ097	Crankcase Gears Vertical Series for 48164	8	AQ105	Corner Junction Gasket Vertical Series for 48164	17
45090	Forward Motion Pin (Slow) for 48164	2	AQ098	Rubber Foot for 48164	9	AQ106	Corner Junction Vertical Series for 48164	18
AQ092	Backward Motion Pin (Fast) for 48164	3	AQ113	5kg Close Casing Vertical for 48164	10	AQ117	Inox Foot Vertical Series for 48164	19
AI869	Large Tooth Gear for 48164	4	AQ114	Crossbar Casing for 48164	11	AQ108	Aluminum Nut for 48164	20
AQ118	Gear (Fast Motion) Steel for 48164	4	AQ115	5kg Rack for 48164	12	AQ109	Ring Nut Vertical Series for 48164	21
AQ093	Couple Clamps for 48164	5	AQ102	Seal Buffer for 48164	13	AQ119	5kg Open Casing Vertical for 48164	22
AQ094	Flange Complete for 48164	6	AQ103	Buffer+Cover for 48164	14	AQ121	5kg Casing Horizontal Inox for 48164	23
AQ095	Set of Filling Tubes for 48164	6a, 6b, 6c, 6d	AQ104	Inox Screw 8x40 for 48164	15			
AQ096	Tube Lock for 48164	7	AQ116	5kg Stainless Steel Tube for 48164	16			