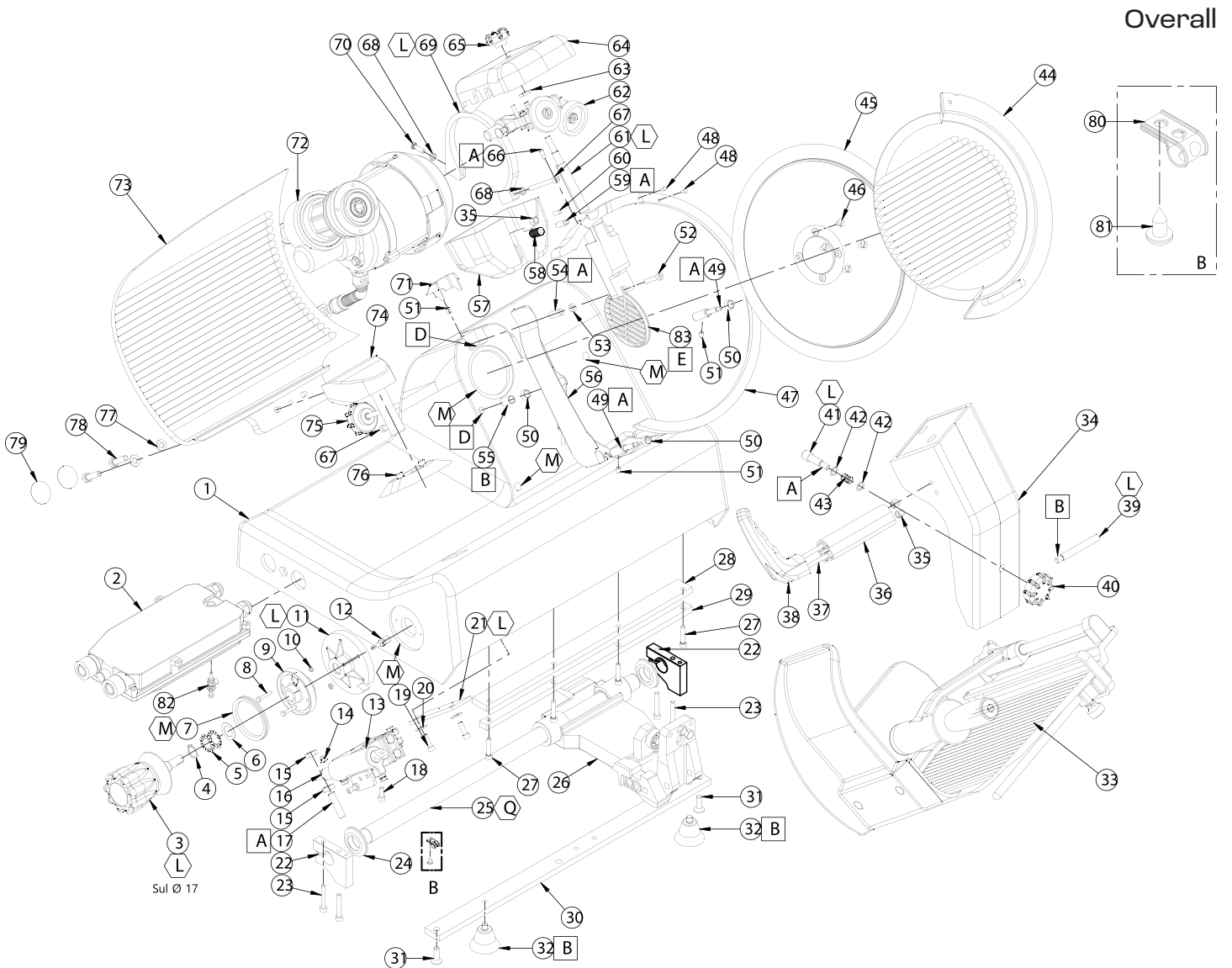


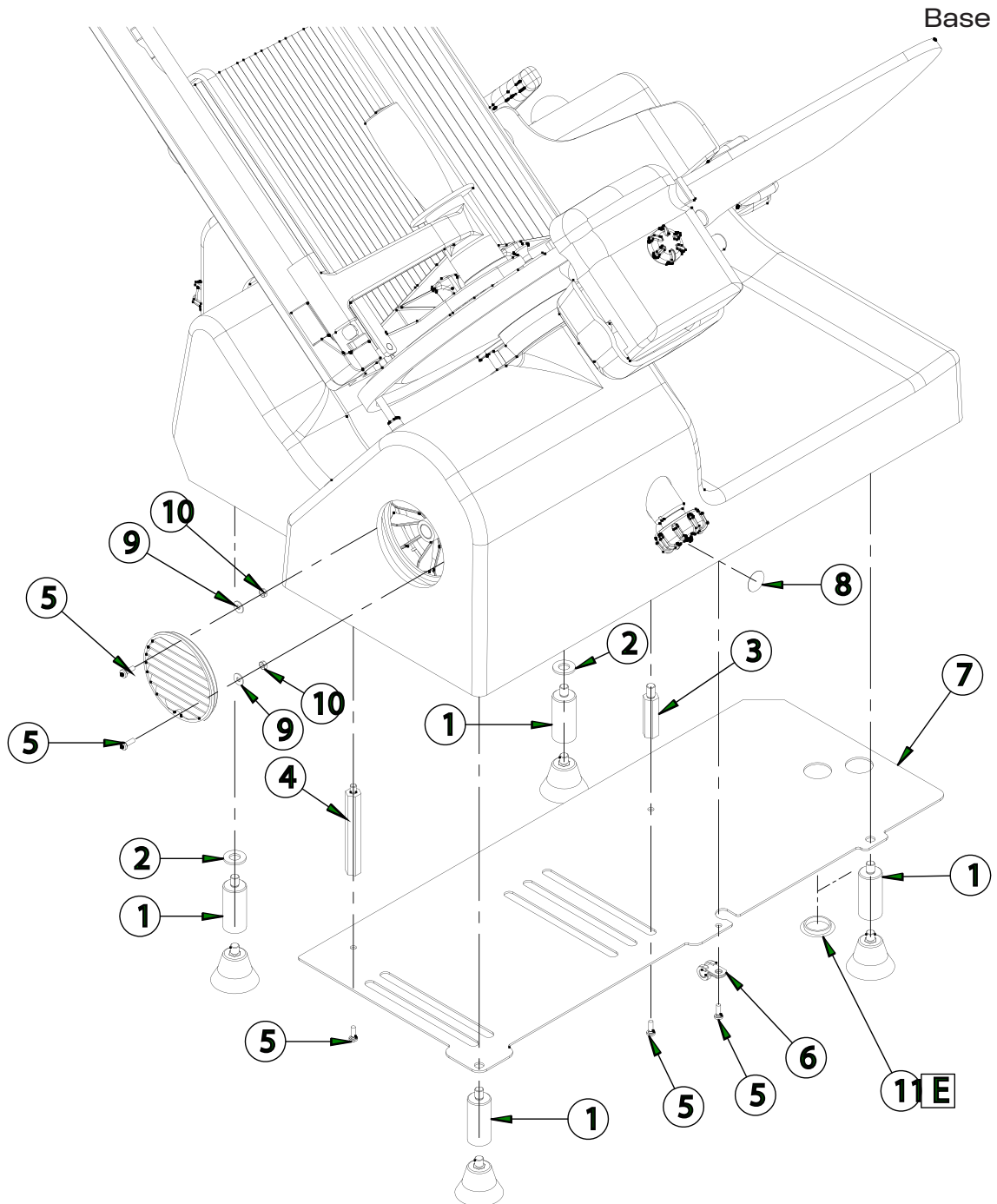
# PARTS BREAKDOWN

ITEM	MODEL
48391	MS-IT-0330



# PARTS BREAKDOWN

ITEM	MODEL
48391	MS-IT-0330



# PARTS BREAKDOWN

ITEM	MODEL
48391	MS-IT-0330

Overall

Item No.	Description	Position	Item No.	Description	Position	Item No.	Description	Position
AS949	Frame for 48391	1	AS977	Rod for 48391	29	AT004	Low Cover for Sharpener for 48391	57
AS950	120/60 USA with Thermal Protection for 48391	2	AS978	Rod for 48391	30	AT005	Knob for Low Cover Locking for 48391	58
AS951	Index Knob Black Assembly for 48391	3	AS979	Screw for 48391	31	AT006	Pin for Low Cover Locking for 48391	59
AS952	External Ring for 48391	4	AS980	Rubber Foot for 48391	32	AT007	Grub Screw for 48391	60
AS953	Spring for 48391	5	AS981	Plate AB USA with Black Handle for 48391	33	AT008	Sharpener Shaft for 48391	61
AS954	Polyethylene Washer for 48391	6	AS982	Meat Plate Support for 48391	34	AT009	Sharpener Assembly for 48391	62
AS955	V Ring for 48391	7	AS983	Nut for 48391	35	AT010	Nut for 48391	63
AS956	Screw for 48391	8	AS984	Spacer for 48391	36	AT011	Sharpener Cover for 48391	64
AS957	Flange for 48391	9	AS985	Grub Screw for 48391	37	AT012	Black Knob for Sharpener Cover for 48391	65
AS958	Nut for 48391	10	AS986	Black Handle for 48391	38	AT013	Pin for Sharpener Positioning for 48391	66
AS959	Cam for 48391	11	AS987	Meat Plate Support Rotation Pin for 48391	39	AT014	Screw for 48391	67
AS960	Cam Locking Pin for 48391	12	AS988	Black Knob for 48391	40	AT015	Nut for 48391	68
AS961	Sleeve Assembly for 48391	13	AS989	Meat Plate Support Pin for 48391	41	AT016	Motor Support Collar for 48391	69
AS962	Screw for 48391	14	AS990	Washer for 48391	42	AT017	Screw for 48391	70
AS963	Nut for 48391	15	AS991	Spring for 48391	43	AT018	Knife Guard Rubber for 48391	71
AS964	Sleeve Pin for 48391	16	AS992	USA Knife Cover Assembly for 48391	44	AT019	120/60 Monophase Ratimotor for 48391	72
AS965	Grub Screw for 48391	17	AS879	Blade 330-57-4-286 for 48391	45	AT020	Gauge Plate for 48391	73
AS966	Screw for 48391	18	AS993	Screw for 48391	46	AT021	Gauge Plate Support Preassembly for 48391	74
AS967	Screw for 48391	19	AS994	Knife Guard for 48391	47	AT022	Knife Cover Tie Rod Assy with Black Handle for 48391	75
AS968	Washer for 48391	20	AS995	Pin for 48391	48	AT023	Gauge Plate Rubber for 48391	76
AS969	Square Guide for 48391	21	AS996	Knife Guard Pin for 48391	49	AT024	Washer for 48391	77
AS970	Round Guide Support for 48391	22	AS997	Pin Rubber for 48391	50	AT025	Screw for 48391	78
AS971	Screw for 48391	23	AS998	Grub Screw for 48391	51	AT026	Adhesive Plate Ø35 for 48391	79
AS972	Bumper for 48391	24	AS999	Screw for 48391	52	AT027	Collar for 48391	80
AS973	Round Guide for 48391	25	AT000	Washer for 48391	53	AT028	Screw for 48391	81
AS974	Carriage Assembly for 48391	26	AT001	Knife Guard Up Pin for 48391	54	AT029	Grounding for 48391	82
AS975	Screw for 48391	27	AT002	Deflector Magnet for 48391	55	AT030	Air Intake Grill for 48391	83
AS976	Rod for 48391	28	AT003	Deflector Assembly for 48391	56			

# PARTS BREAKDOWN

ITEM	MODEL
48391	MS-IT-0330

Base

Item No.	Description	Position	Item No.	Description	Position	Item No.	Description	Position
AT031	Foot Spacer for 48391	1	AT035	Screw for 48391	5	AT039	Washer for 48391	9
AT032	Washer for 48391	2	AT036	Cable Clamp for 48391	6	AS958	Nut for 48391	10
AT033	Pin Spacer for 48391	3	AT037	Cover for Motor for 48391	7	AT040	Plug for 48391	11
AT034	Pin Spacer for 48391	4	AT038	Cover for Screw for 48391	8			